



## DATA SHEET - VECTOR 2400 FOUR HEAD PLOTTER

**Plotting Technology:** InkJet Plotting.

**Control System:** Closed-loop servo control system in both length and width directions.

**DPI:** 300 dpi.

**Max Plotting width::** 88 inches.

**Plotting Speed:** 180 yd<sup>2</sup>/hr (150 m<sup>2</sup>/hr).

**Operation and Display:** Three-key operation panel, self-chek, LED status display.

**Type of Ink:** HP45 cartridge

**Plotter Control Software:** Velocity Control Center

**Paper Type:** Plotter paper 60", 63", 66", 72", 86, 88" - 30 WT - 35 WT (paper thickness).

**Plotter Output:** HPGL / HPG / PLT

**Plotter Port:** USB / LAN

**Software Platform:** Windows (98, 2000, NT, XP, 7, 8, 10, 11), Mac (via Parallels).

**Power:** 86 - 264 V adapted

**Plotter Dimension:** 120" x 21" x 40"

**Environment:** Temperature 10°C - 30°C, Humidity RH 15 -85% (No condensation).

## Q & A

### Does the plotter come assembled?

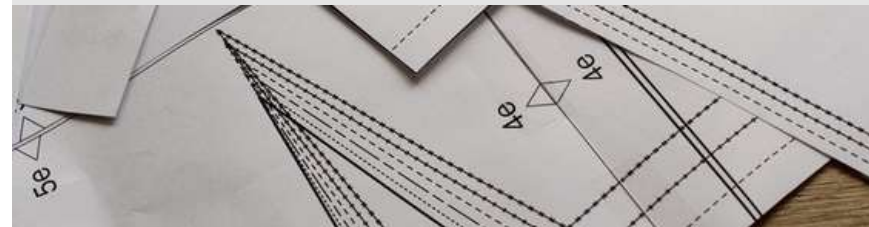
No, Velocity plotters are not pre-assembled due to shipping and logistical considerations. However, we ensure that setup is fast, guided, and stress-free.

### What type of ink does it use?

The plotter uses HP #45 black ink cartridges, which are widely available at retailers such as Target, OfficeMax, Office Depot, and Amazon. You may also choose to purchase cartridges through Velocity Plotters.

### What type of paper is recommended for the Vector 2400 Four Head Plotter?

You can use plotter paper, recommended sizes 60", 63", 66", 70", 86", 88" inches in width. 30WT - 35WT (paper thickness). 3 inches tube core.



## INFO

For more information contact us at  
[info@velocityplotters.com](mailto:info@velocityplotters.com) or call 833-275-6888

**[www.velocityplotters.com](http://www.velocityplotters.com)**