



DATA SHEET - VECTOR 1800 FOUR HEAD PLOTTER

Plotting Technology: InkJet Plotting.

Control System: Closed-loop servo control system in both length and width directions.

DPI: 300 dpi.

Max Plotting width: 72 inches.

Plotting Speed: 180 yd²/hr (150 m²/hr)

Operation and Display: Three-key operation panel, self-check, LED status display.

Type of Ink: HP45 cartridge

Plotter Control Software: Velocity Control Center

Paper Type: Plotter paper 60", 63", 66", 72" - 30 WT - 35 WT (paper thickness).

Plotter Output: HPGL / HPG / PLT

Plotter Port: USB / LAN

Software Platform: Windows (98, 2000, NT, XP, 7, 8, 10, 11), Mac (via Parallels).

Power: 86 - 264 V adapted

Plotter Dimension: 109" x 21" x 40"

Environment: Temperature 10°C - 30°C, Humidity RH 15 -85% (No condensation).

Q & A

Does the plotter come assembled?

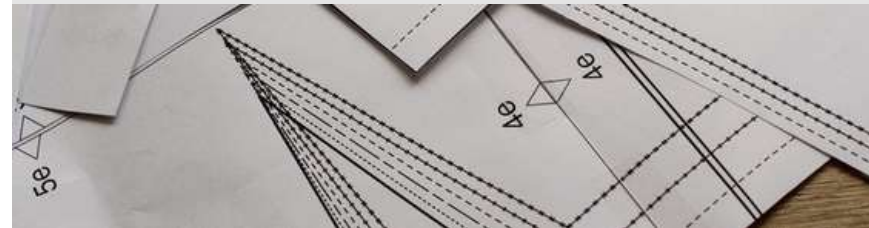
No, Velocity plotters are not pre-assembled due to shipping and logistical considerations. However, we ensure that setup is fast, guided, and stress-free.

What type of ink does it use?

The plotter uses HP #45 black ink cartridges, which are widely available at retailers such as Target, OfficeMax, Office Depot, and Amazon. You may also choose to purchase cartridges through Velocity Plotters.

What type of paper is recommended for the Vector 1800 Four Head Plotter?

You can use plotter paper, recommended sizes 60", 63", 66", 70", 72" inches in width. 30WT - 35WT (paper thickness). 3 inches tube core.



INFO

For more information contact us at
info@velocityplotters.com or call 833-275-6888

www.velocityplotters.com