



## DATA - FLATBED PLOTTER CUTTER

**Control System:** Closed-loop and servo control system

**Table / Repeat Accuracy:** Ultra lighter Hi-tech table / <0.1 mm

**Plotting / Cutting Device:** Inkjet HP45 / Alloy Knife

**Plotting Speed / Max Cutting Speed:** 70 m2 per hour / 1000 mm per second (MAX)

**Data Transmission:** USB / LAN

**Material / Thickness of Cutting:** All kinds of hard cardboard / 0.1 mm - 1.1 mm

**Material fixing:** Vacuum adsorption

**Software DPI:** Bitmap 600 DPI, Vector 0.04 mm

**Working Voltage:** 110V/220V optional / 2.0 kW

**Format:** HPGL / PLT compatible format

**Platform Structure / Repeatability:** Ultra high tech suction platform / <0.1 mm

**Software Platform:** Windows (98, 2000, NT, XP, 7, 8, 10, 11), Mac (via Parallels).

**Available Sizes:** 47" x 35" - 59" x 35" - 59" x 47"

## Q & A

### Does the plotter come assembled?

No, Velocity plotters are not pre-assembled due to shipping and logistical considerations. However, we ensure that setup is fast, guided, and stress-free.

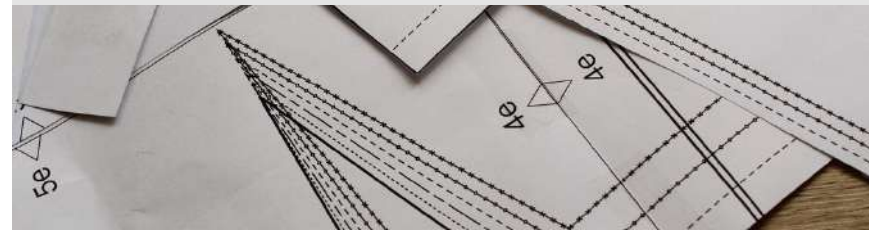
### What type of ink does it use?

The plotter uses HP #45 black ink cartridges, which are widely available at retailers such as Target, OfficeMax, Office Depot, and Amazon. You may also choose to purchase cartridges through Velocity Plotters.

### What type of paper is recommended for the Flatbed Cutter?

Pattern paper (Manila / Tag), Kraft / Brown paper, plotter paper, cardboard, PVC, and plastic board Recommended widths: 36", 45", 54". Core: 3-inch tube

- Manila / Tag: 100 WT - 120 WT - 150 WT (Paper thickness)
- Kraft / Brown: 40 WT - 50 WT (Paper thickness)



## INFO

For more information contact us at  
info@velocityplotters.com or call 833-275-6888

[www.velocityplotters.com](http://www.velocityplotters.com)